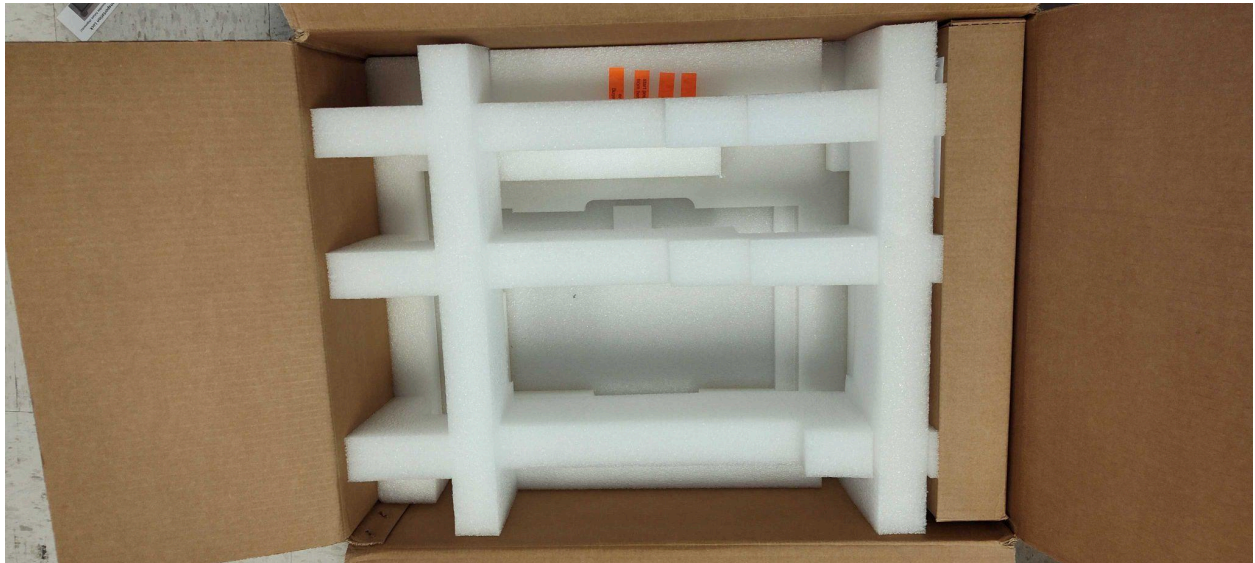


How to pack an LFP qb

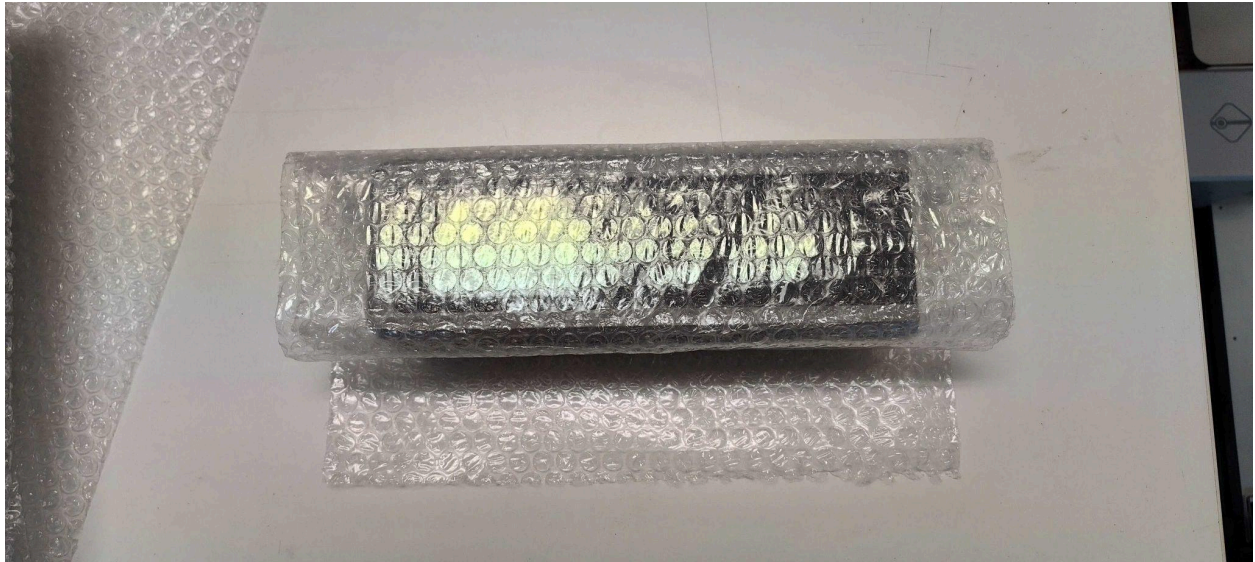


The foam pieces are for protecting the table and the rectangular box on the right is for cables, sample holders, sensing unit and other accessories.

To prepare the LFP qb remove the spectral measurement head and the sensing unit.



Individually wrap these to securely protect them and set aside.



Remove the table extension and set aside.



Take the top piece of the inner packaging out of the shipping box and place only the table into the bottom piece of the inner packaging - it only fits one way.

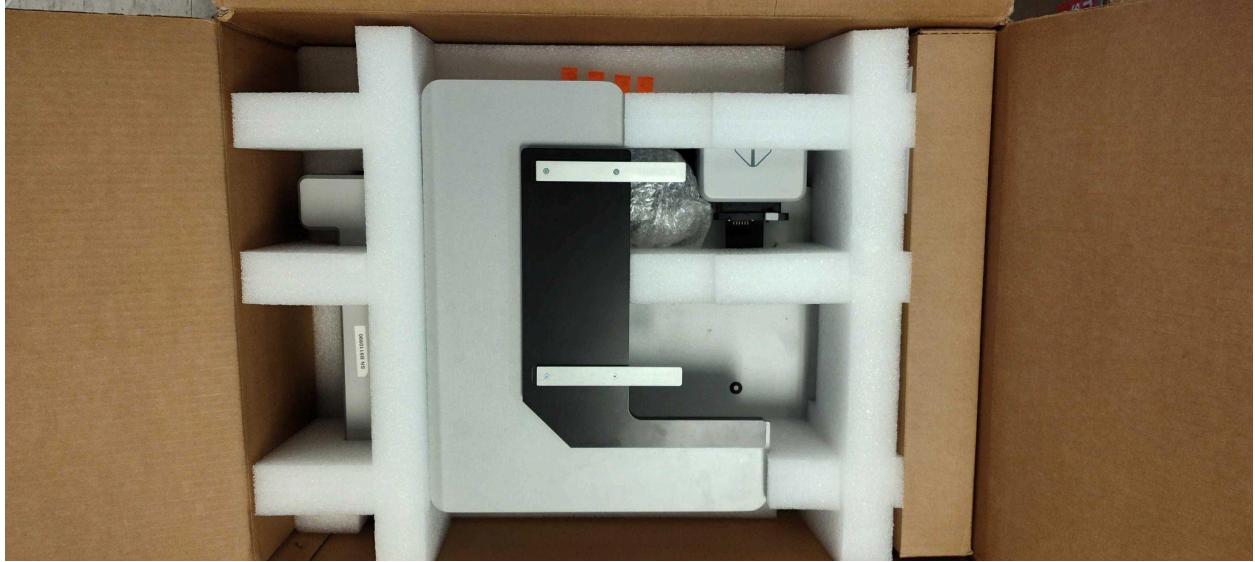


Next, place the top piece of the inner packaging over the table - it only fits one way.



Next, place the spectral measurement head as shown above - make sure it cannot shift during shipping.

Finally, place the table extension into the inner packaging recesses - it only fits one way.



Fill any voids with packing material to ensure the parts do not shift during transport, place a copy of the shipping instructions with your rma# in the box and securely seal with packing tape.